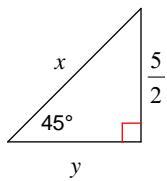


# Special Right Triangles 2

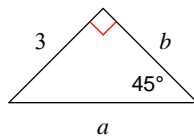
© 2011 Kuta Software LLC. All rights reserved.

**Find the missing side lengths. Leave your answers as radicals in simplest form.**

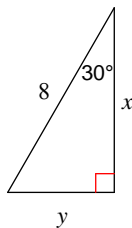
1)



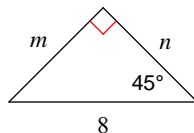
2)



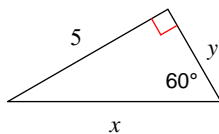
3)



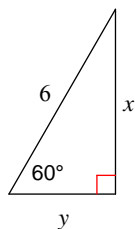
4)



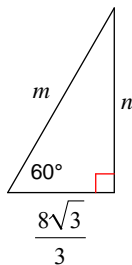
5)



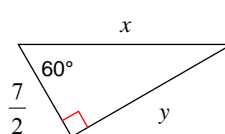
6)



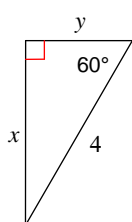
7)



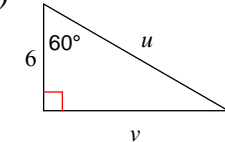
8)



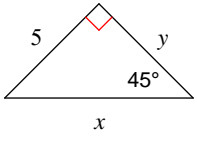
9)



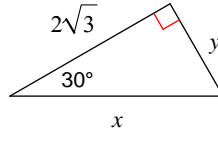
10)



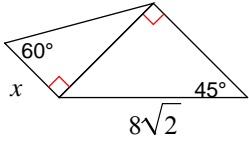
11)



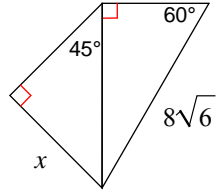
12)



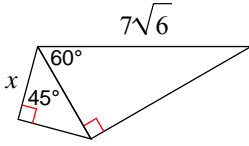
13)



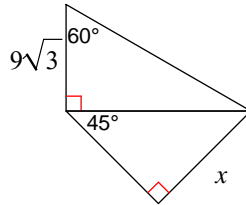
14)



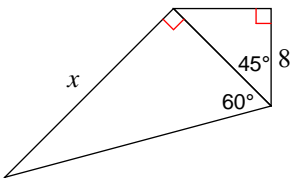
15)



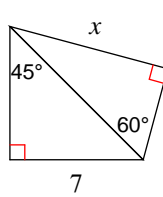
16)



17)



18)



## Answers to Special Right Triangles 2 (ID: 1)

$$1) x = \frac{5\sqrt{2}}{2}, y = \frac{5}{2}$$

$$2) a = 3\sqrt{2}, b = 3$$

$$3) x = 4\sqrt{3}, y = 4$$

$$4) m = 4\sqrt{2}, n = 4\sqrt{2}$$

$$5) x = \frac{10\sqrt{3}}{3}, y = \frac{5\sqrt{3}}{3}$$

$$6) x = 3\sqrt{3}, y = 3$$

$$7) m = \frac{16\sqrt{3}}{3}, n = 8$$

$$8) x = 7, y = \frac{7\sqrt{3}}{2}$$

$$9) x = 2\sqrt{3}, y = 2$$

$$10) u = 12, v = 6\sqrt{3}$$

$$11) x = 5\sqrt{2}, y = 5$$

$$12) x = 4, y = 2$$

$$13) \frac{8\sqrt{3}}{3}$$

$$14) 12$$

$$15) \frac{7\sqrt{3}}{2}$$

$$16) \frac{27\sqrt{2}}{2}$$

$$17) 8\sqrt{6}$$

$$18) \frac{7\sqrt{6}}{2}$$